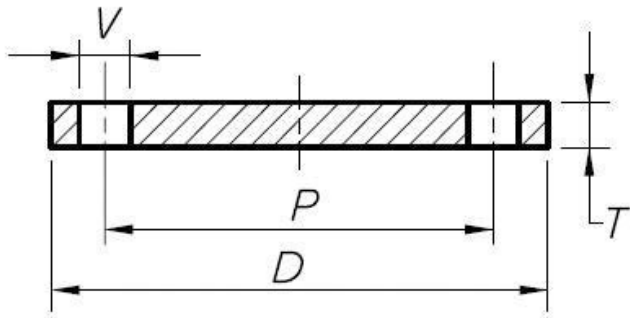


TABLE "H" BLIND PLATE FLANGES



Nominal Pipe Size (mm)	GVF Code	OD of Flange D (mm)	Bolt Circle Diameter P (mm)	Bolt Hole Diameter V (mm)	Number of Bolt Holes	Thickness of Flange T (mm)	Weight Approx. (Kg)
15	ASBLH015	115	83	18	4	13	0.98
20	ASBLH020	115	83	18	4	13	1.1
25	ASBLH025	120	87	18	4	14	1.16
32	ASBLH032	135	98	18	4	17	1.82
40	ASBLH040	140	105	18	4	17	1.96
50	ASBLH050	165	127	18	4	19	3.1
65	ASBLH065	185	146	18	8	19	3.78
80	ASBLH080	205	165	18	8	22	5.44
100	ASBLH100	230	191	18	8	25	7.88
125	ASBLH125	280	235	22	8	29	12.5
150	ASBLH150	305	260	22	12	29	15.8
200	ASBLH200	370	324	22	12	32	26.16
250	ASBLH250	430	381	26	12	35	38.1
300	ASBLH300	490	438	26	16	41	57.8
350	ASBLH350	550	495	30	16	48	85.2
400	ASBLH400	610	552	30	20	54	119
450	ASBLH450	675	610	33	20	60	195
500	ASBLH500	735	673	33	24	67	-
600	ASBLH600	850	781	36	24	76	-

MATERIALS
Q235B / Rst37.2
Plate Steel

SPECIFICATIONS
Pressure Rating
3500 kPa

STANDARD
Dimensional
AS2129

VALVES

GALVANISED
MALLEABLE

STAINLESS
STEEL FITTINGS

BLACK & GAL
STEEL FITTINGS

HIGH PRESSURE
FITTINGS

CAMLOCKS

ROLL GROOVE

BUTTWELD

FLANGES