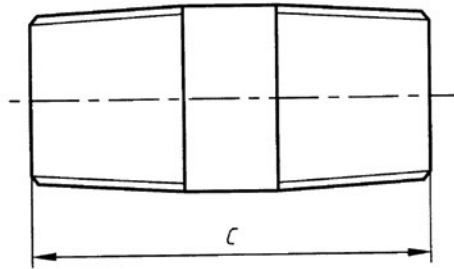


# BARREL NIPPLE

## STEEL FITTINGS



VALVES

GALVANISED  
MALLEABLESTAINLESS  
STEEL FITTINGSBLACK & GAL  
STEEL FITTINGSHIGH PRESSURE  
FITTINGS

CAMLOCKS

ROLL GROOVE

BUTTWELD

FLANGES

GVF CODE		DN SIZE (mm)	C (mm)	WEIGHT (kg)
BLACK STEEL	GAL STEEL			
BSBN015	GSBN015	15	51	0.06
BSBN020	GSBN020	20	54	0.08
BSBN025	GSBN025	25	60	0.16
BSBN032	GSBN032	32	70	0.26
BSBN040	GSBN040	40	70	0.31
BSBN050	GSBN050	50	79	0.39
BSBN065	GSBN065	65	89	0.59
BSBN080	GSBN080	80	102	0.88
BSBN100	GSBN100	100	114	1.50

MATERIALS	
Carbon Steel	0.25% Max C
Galvanising	HDG
Zinc Plating	EZP

SPECIFICATIONS
Thread
BSP to ISO 7-1
Cold Working Pressure
5000 kPa

STANDARD
Manufacturing
EN10241-2000