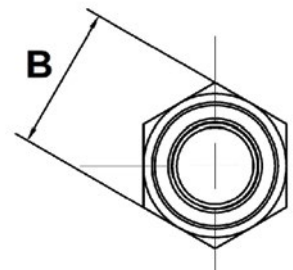
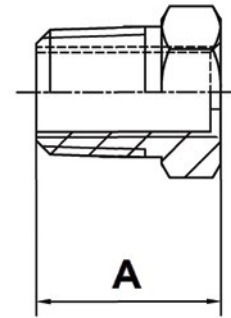


REDUCING BUSH

STEEL FITTINGS

GVF CODE		DN SIZE (mm)	A (mm)	B (mm)	WEIGHT (kg)
BLACK STEEL	GAL STEEL				
BSHB00806	GSHB00806	8 x 6	19.84	16	0.02
BSHB01006	GSHB01006	10 x 6	21.41	19	0.03
BSHB01008	GSHB01008	10 x 8	21.41	19	0.02
BSHB01508	GSHB01508	15 x 8	26.97	22.22	0.05
BSHB01510	GSHB01510	15 x 10	26.97	22.22	0.05
BSHB02008	GSHB02008	20 x 8	28.57	27	0.08
BSHB02010	GSHB02010	20 x 10	28.57	27	0.07
BSHB02015	GSHB02015	20 x 15	28.57	27	0.05
BSHB02508	GSHB02508	25 x 8	30.94	35	0.14
BSHB02510	GSHB02510	25 x 10	30.94	35	0.12
BSHB02515	GSHB02515	25 x 15	30.94	35	0.12
BSHB02520	GSHB02520	25 x 20	30.94	35	0.09
BSHB03215	GSHB03215	32 x 15	36.49	47.24	0.27
BSHB03220	GSHB03220	32 x 20	36.49	47.24	0.24
BSHB03225	GSHB03225	32 x 25	36.49	47.24	0.19
BSHB04015	GSHB04015	40 x 15	38.1	52.07	0.33
BSHB04020	GSHB04020	40 x 20	38.1	52.07	0.30
BSHB04025	GSHB04025	40 x 25	38.1	52.07	0.25
BSHB04032	GSHB04032	40 x 32	38.1	52.07	0.18
BSHB05015	GSHB05015	50 x 15	41.27	61.29	0.54
BSHB05020	GSHB05020	50 x 20	41.27	61.29	0.53
BSHB05025	GSHB05025	50 x 25	41.27	61.29	0.50
BSHB05032	GSHB05032	50 x 32	41.27	61.29	0.41
BSHB05040	GSHB05040	50 x 40	41.27	61.29	0.36
BSHB06540	GSHB06540	65 x 40	47.63	79.38	0.97
BSHB06550	GSHB06550	65 x 50	47.63	79.38	0.72
BSHB08025	GSHB08025	80 x 25	53.98	92.08	1.52
BSHB08050	GSHB08050	80 x 50	53.98	92.08	1.15
BSHB08065	GSHB08065	80 x 65	53.98	92.08	0.87
BSHB10050	GSHB10050	100 x 50	62	115.87	2.55
BSHB10065	GSHB10065	100 x 65	62	115.87	2.34
BSHB10080	GSHB10080	100 x 80	62	115.87	2.17



MATERIALS

Carbon Steel	0.25% Max C
Galvanising	HDG
Zinc Plating	EZP

SPECIFICATIONS

Thread
BSP to ISO 7-1
Cold Working Pressure
5000 kPa

STANDARD

Manufacturing
EN10241-2000

VALVES

GALVANISED
MALLEABLESTAINLESS
STEEL FITTINGSBLACK & GAL
STEEL FITTINGSHIGH PRESSURE
FITTINGS

CAMLOCKS

ROLL GROOVE

BUTTWELD

FLANGES