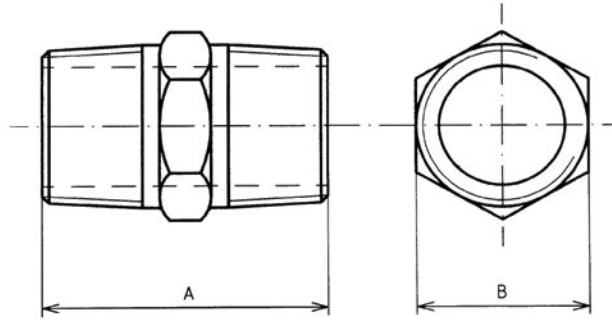


# HEX NIPPLE

## STEEL FITTINGS



VALVES  
 GALVANISED  
 MALLEABLE  
 STAINLESS  
 STEEL FITTINGS  
 BLACK & GAL  
 STEEL FITTINGS  
 HIGH PRESSURE  
 FITTINGS  
 CAMLOCKS  
 ROLL GROOVE  
 BUTTWELD  
 FLANGES

GVF CODE		DN SIZE (mm)	A (mm)	B (mm)	WEIGHT (kg)
BLACK STEEL	GAL STEEL				
BSHN006	GSHN006	6	25	12	0.01
BSHN008	GSHN008	8	31	14	0.03
BSHN010	GSHN010	10	33	17	0.04
BSHN015	GSHN015	15	43	22	0.07
BSHN020	GSHN020	20	48	27	0.09
BSHN025	GSHN025	25	52	36	0.14
BSHN032	GSHN032	32	59	46	0.28
BSHN040	GSHN040	40	61	50	0.32
BSHN050	GSHN050	50	68	65	0.50
BSHN065	GSHN065	65	80	78	0.85
BSHN080	GSHN080	80	89	90	0.96
BSHN100	GSHN100	100	102	115	1.48

MATERIALS	
Carbon Steel	0.25% Max C
Galvanising	HDG
Zinc Plating	EZP

SPECIFICATIONS
Thread
BSP to ISO 7-1
Cold Working Pressure
5000 kPa

STANDARD
Manufacturing
EN10241-2000