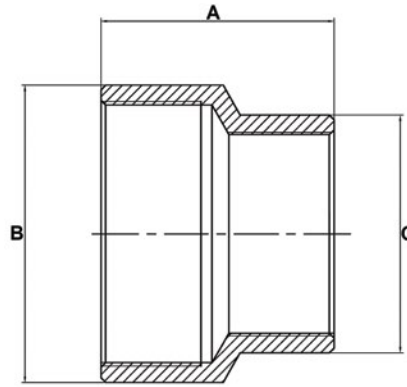


REDUCING SOCKET STEEL FITTINGS



GVF CODE		DN SIZE (mm)	A (mm)	B (mm)	C (mm)	WEIGHT (kg)
BLACK STEEL	GAL STEEL					
BSRS00806	GSRS00806	8 x 6	25.4	19.05	15.88	0.03
BSRS01008	GSRS01008	10 x 8	26.99	22.22	19.05	0.04
BSRS01508	GSRS01508	15 x 8	36.51	28.57	22.22	0.09
BSRS01510	GSRS01510	15 x 10	36.51	28.57	22.22	0.09
BSRS02008	GSRS02008	20 x 8	39.68	34.92	30.16	0.17
BSRS02010	GSRS02010	20 x 10	39.68	34.92	30.16	0.16
BSRS02015	GSRS02015	20 x 15	39.68	34.92	30.16	0.14
BSRS02510	GSRS02510	25 x 10	47.63	41.27	31.75	0.22
BSRS02515	GSRS02515	25 x 15	47.63	41.27	31.75	0.22
BSRS02520	GSRS02520	25 x 20	47.63	41.27	34.92	0.20
BSRS03220	GSRS03220	32 x 20	57.15	50.8	38.10	0.36
BSRS03225	GSRS03225	32 x 25	57.15	50.8	44.45	0.35
BSRS04020	GSRS04020	40 x 20	60.33	57.15	38.10	0.45
BSRS04025	GSRS04025	40 x 25	60.33	57.15	44.45	0.45
BSRS04032	GSRS04032	40 x 32	60.33	57.15	50.80	0.42
BSRS05020	GSRS05020	50 x 20	63.5	69.85	38.10	0.15
BSRS05025	GSRS05025	50 x 25	63.5	69.85	44.45	0.60
BSRS05032	GSRS05032	50 x 32	63.5	69.85	50.80	0.58
BSRS05040	GSRS05040	50 x 40	63.5	69.85	57.15	0.57
BSRS06540	GSRS06540	65 x 40	69.85	88.9	57.15	0.96
BSRS06550	GSRS06550	65 x 50	69.85	88.9	69.85	1.08
BSRS08025	GSRS08025	80 x 25	79.37	101.6	44.45	1.06
BSRS08050	GSRS08050	80 x 50	79.37	101.6	69.85	1.03
BSRS08065	GSRS08065	80 x 65	79.37	101.6	88.90	1.18
BSRS10050	GSRS10050	100 x 50	100	127	69.85	2.40
BSRS10065	GSRS10065	100 x 65	100	127	88.90	2.27
BSRS10080	GSRS10080	100 x 80	100	127	101.60	2.26

MATERIALS	
Carbon Steel	0.25% Max C
Galvanising	HDG
Zinc Plating	EZP

SPECIFICATIONS
Thread
BSP to ISO 7-1
Cold Working Pressure
5000 kPa

STANDARD
Manufacturing
EN10241-2000