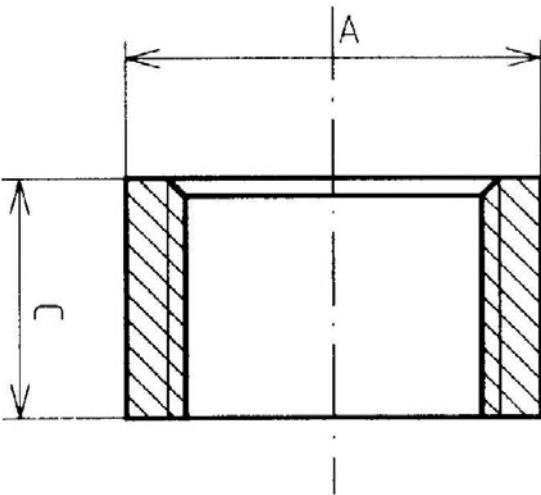


HALF SOCKET

STEEL FITTINGS



GVF CODE	DN SIZE (mm)	A (mm)	C (mm)	WEIGHT (kg)
BSSH010	10	22	12	0.02
BSSH015	15	27	16	0.04
BSSH020	20	32.5	19	0.05
BSSH025	25	39.5	21	0.07
BSSH032	32	49	25	0.13
BSSH040	40	56	25	0.16
BSSH050	50	68	28	0.22
BSSH065	65	84	30	0.30
BSSH080	80	98	35	0.46
BSSH100	100	124	40	0.92

MATERIALS	
Carbon Steel	0.25% Max C

SPECIFICATIONS
Thread
BSP to ISO 7-1
Cold Working Pressure
5000 kPa

STANDARD
Manufacturing
EN10241-2000