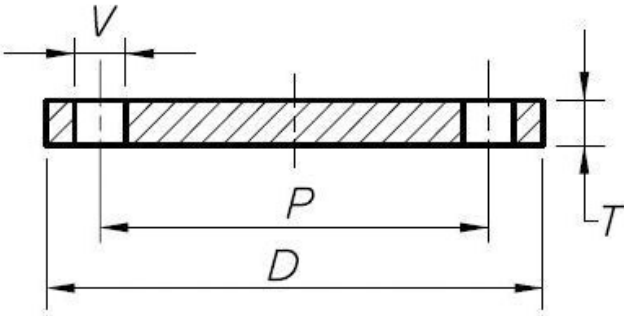


# EN1092-1 PN16 BLIND PLATE FLANGES



Nominal Pipe Size (mm)	GVF Code	OD of Flange D (mm)	Bolt Circle Diameter P (mm)	Bolt Hole Diameter V (mm)	Number of Bolt Holes	Thickness of Flange T (mm)	Weight Approx. (Kg)
15	DIN16BL015	95	65	14	4	14	-
20	DIN16BL020	105	75	14	4	16	-
25	DIN16BL025	115	85	14	4	16	1.13
32	DIN16BL032	140	100	18	4	18	1.65
40	DIN16BL040	150	110	18	4	18	1.84
50	DIN16BL050	165	125	18	4	18	2.59
65	DIN16BL065	180	145	18	4	18	3.73
80	DIN16BL080	200	160	18	8	20	4.27
100	DIN16BL100	220	180	18	8	20	5.83
125	DIN16BL125	250	210	18	8	22	7.67
150	DIN16BL150	285	240	22	8	22	10.85
200	DIN16BL200	340	295	22	12	24	-
250	DIN16BL250	405	355	26	12	26	-
300	DIN16BL300	460	410	26	12	28	-

MATERIALS
Q235B / Rst37.2
Plate Steel

SPECIFICATIONS
Pressure Rating
1600 kPa

STANDARD
Dimensional
EN1092-1

VALVES  
 GALVANISED  
 MALLEABLE  
 STAINLESS  
 STEEL FITTINGS  
 BLACK & GAL  
 STEEL FITTINGS  
 HIGH PRESSURE  
 FITTINGS  
 CAMLOCKS  
 ROLL GROOVE  
 BUTTWELD  
**FLANGES**