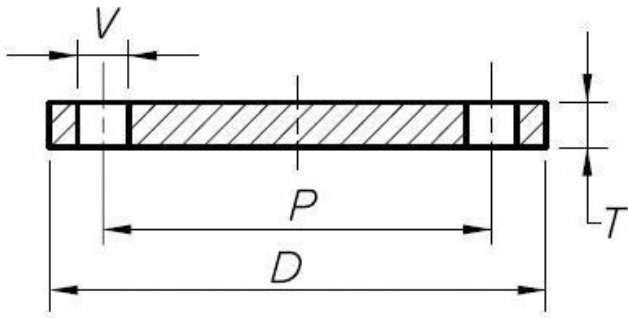


EN1092-1 PN16 SLIP ON PLATE FLANGES



Nominal Pipe Size (mm)	GVF Code	OD of Flange D (mm)	Bolt Circle Diameter P (mm)	Bolt Hole Diameter V (mm)	Number of Bolt Holes	Thickness of Flange T (mm)	Weight Approx. (Kg)
15	DIN16S0015	95	65	14	4	14	0.59
20	DIN16S0020	105	75	14	4	16	0.85
25	DIN16S0025	115	85	14	4	16	1.02
32	DIN16S0032	140	100	18	4	18	1.47
40	DIN16S0040	150	110	18	4	18	1.61
50	DIN16S0050	165	125	18	4	18	2.18
65	DIN16S0065	180	145	18	4	18	2.66
80	DIN16S0080	200	160	18	8	20	3.27
100	DIN16S0100	220	180	18	8	20	4.01
125	DIN16S0125	250	210	18	8	22	4.95
150*	DIN16S0150	285	240	22	8	22	6.54
200	DIN16S0200	340	295	22	12	24	9.01
250	DIN16S0250	405	355	26	12	26	12.76
300	DIN16S0300	460	410	26	12	28	17.48

MATERIALS
Q235B / Rst37.2
Plate Steel

SPECIFICATIONS
Pressure Rating
1600 kPa
*Available to suit 165 or 168 pipe

STANDARD
Dimensional
EN1092-1

VALVES

GALVANISED
MALLEABLE

STAINLESS
STEEL FITTINGS

BLACK & GAL
STEEL FITTINGS

HIGH PRESSURE
FITTINGS

CAMLOCKS

ROLL GROOVE

BUTTWELD

FLANGES