

DRD TABLE D FLANGE & BACKNUT

GALVANISED MALLEABLE FITTINGS

VALVES

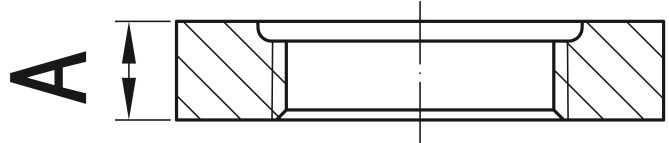
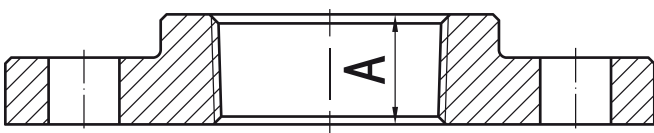
GALVANISED
MALLEABLESTAINLESS
STEEL FITTINGSBLACK & GAL
STEEL FITTINGSHIGH PRESSURE
FITTINGS

CAMLOCKS

ROLL GROOVE

BUTTWELD

FLANGES



| GVF CODE FLANGE | DN SIZE (mm) | A (mm) | WEIGHT (kg) |
|--------------------|-----------------|-----------|----------------|
| GMDRF015 | 15 | 15 | 0.3 |
| GMDRF020 | 20 | 16 | 0.33 |
| GMDRF025 | 25 | 19 | 0.45 |
| GMDRF032 | 32 | 21 | 0.46 |
| GMDRF040 | 40 | 21 | 0.62 |
| GMDRF050 | 50 | 26 | 0.96 |
| GMDRF065 | 65 | 30 | 1.29 |
| GMDRF080 | 80 | 33 | 1.75 |
| GMDRF100 | 100 | 39 | 2.64 |
| GMDRF150 | 150 | 40 | 4.73 |

| GVF CODE FLANGE | DN SIZE (mm) | A (mm) | WEIGHT (kg) |
|--------------------|-----------------|-----------|----------------|
| GMBKN015 | 15 | 7.9 | 0.03 |
| GMBKN020 | 20 | 8.6 | 0.05 |
| GMBKN025 | 25 | 9.7 | 0.08 |
| GMBKN032 | 32 | 10.7 | 0.1 |
| GMBKN040 | 40 | 11.9 | 0.14 |
| GMBKN050 | 50 | 13.5 | 0.2 |

MATERIALS

Galvanised Malleable
Ductile Iron BS EN 1562

SPECIFICATIONS

Thread
BSP to ISO 7-1
Cold Working Pressure
1000 kPa

STANDARD

Dimensional
BS EN 10242