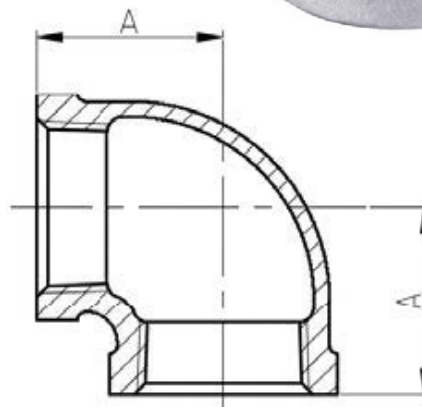
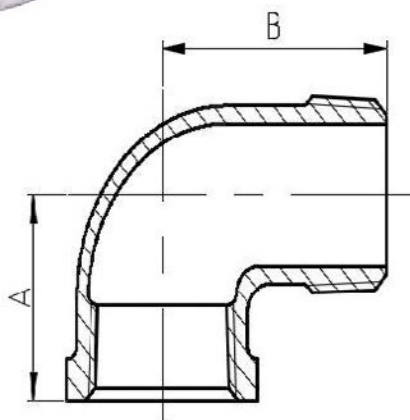


# ELBOW 90° MF & FF

## GALVANISED MALLEABLE FITTINGS



GVF CODE M&F 90°	DN SIZE (mm)	A (mm)	B (mm)	WEIGHT (kg)
GMEMF90008	8	21	28	0.04
GMEMF90010	10	25	32	0.06
GMEMF90015	15	28	37	0.09
GMEMF90020	20	33	43	0.14
GMEMF90025	25	38	52	0.21
GMEMF90032	32	45	60	0.35
GMEMF90040	40	50	65	0.43
GMEMF90050	50	58	74	0.73
GMEMF90065	65	69	88	1.12
GMEMF90080	80	78	98	1.53
GMEMF90100	100	96	118	2.8

GVF CODE F&F 90°	DN SIZE (mm)	A (mm)	WEIGHT (kg)
GMEFF90008	8	21	0.04
GMEFF90010	10	25	0.06
GMEFF90015	15	28	0.09
GMEFF90020	20	33	0.14
GMEFF90025	25	38	0.21
GMEFF90032	32	45	0.34
GMEFF90040	40	50	0.42
GMEFF90050	50	58	0.68
GMEFF90065	65	69	1.09
GMEFF90080	80	78	1.48
GMEFF90100	100	96	2.8
GMEFF90150	150	131	6.58

MATERIALS
Galvanised Malleable
Ductile Iron BS EN 1562

SPECIFICATIONS
Thread
BSP to ISO 7-1
Cold Working Pressure
1000 kPa

STANDARD
Dimensional
BS EN 10242

VALVES

GALVANISED  
MALLEABLESTAINLESS  
STEEL FITTINGSBLACK & GAL  
STEEL FITTINGSHIGH PRESSURE  
FITTINGS

CAMLOCKS

ROLL GROOVE

BUTTWELD

FLANGES