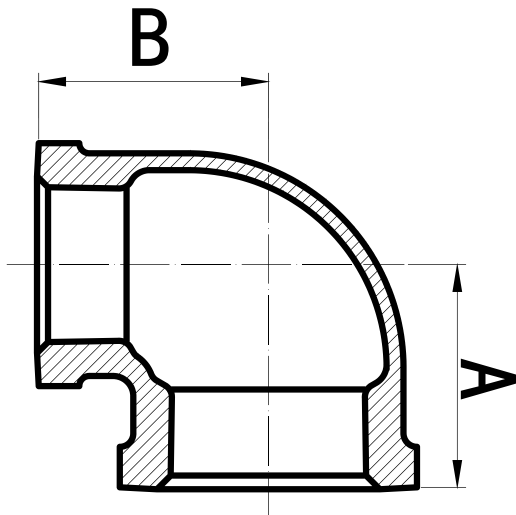


REDUCING ELBOW

GALVANISED MALLEABLE FITTINGS



GVF CODE	DN SIZE (mm)	A (mm)	B (mm)	WEIGHT (kg)
GMER2015	20 x 15	30	31	0.13
GMER2510	25 x 10	30	32	0.16
GMER2515	25 x 15	32	34	0.15
GMER2520	25 x 20	35	36	0.19
GMER3210	32 x 10	32	36.5	0.23
GMER3215	32 x 15	32	37	0.21
GMER3220	32 x 20	36	41	0.26
GMER3225	32 x 25	40	42	0.29
GMER4015	40 x 15	34	41	0.27
GMER4020	40 x 20	37	42	0.25
GMER4025	40 x 25	42	46	0.27
GMER4032	40 x 32	46	48	0.39
GMER5015	50 x 15	35	47	0.41
GMER5020	50 x 20	40	48	0.43
GMER5025	50 x 25	43	50	0.48
GMER5032	50 x 32	47	53	0.55
GMER5040	50 x 40	52	56	0.59

MATERIALS

Galvanised Malleable
 Ductile Iron BS EN 1562

SPECIFICATIONS

Thread
 BSP to ISO 7-1
 Cold Working Pressure
 1000 kPa

STANDARD

Dimensional
 BS EN 10242

 VALVES
 GALVANISED MALLEABLE
 STAINLESS STEEL FITTINGS
 BLACK & GAL STEEL FITTINGS
 HIGH PRESSURE FITTINGS
 CAMLOCKS
 ROLL GROOVE
 BUTTWELD
 FLANGES