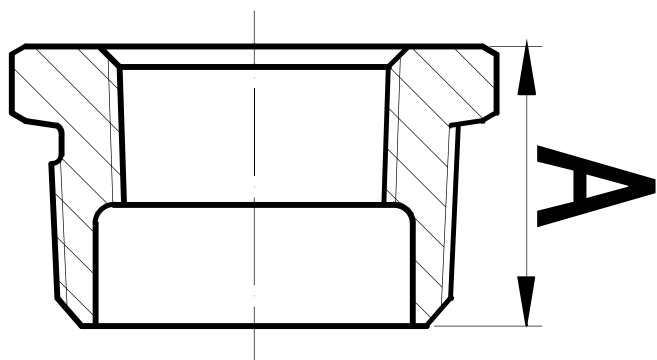


HEX REDUCING BUSH

GALVANISED MALLEABLE FITTINGS



GVF CODE	DN SIZE (mm)	A (mm)	WEIGHT (kg)
GMHB00806	8 x 6	20	0.02
GMHB01008	10 x 8	20	0.02
GMHB01508	15 x 8	24	0.03
GMHB01510	15 x 10	24	0.04
GMHB02008	20 x 8	26	0.07
GMHB02010	20 x 10	26	0.06
GMHB02015	20 x 15	26	0.05
GMHB02508	25 x 8	29	0.11
GMHB02510	25 x 10	29	0.1
GMHB02515	25 x 15	29	0.1
GMHB02520	25 x 20	29	0.09
GMHB03215	32 x 15	31	0.17
GMHB03220	32 x 20	31	0.16
GMHB03225	32 x 25	31	0.13
GMHB04015	40 x 15	31	0.21
GMHB04020	40 x 20	31	0.21
GMHB04025	40 x 25	31	0.19
GMHB04032	40 x 32	31	0.13

GVF CODE	DN SIZE (mm)	A (mm)	WEIGHT (kg)
GMHB05015	50 x 15	48	0.3
GMHB05020	50 x 20	48	0.3
GMHB05025	50 x 25	35	0.34
GMHB05032	50 x 32	35	0.3
GMHB05040	50 x 40	35	0.26
GMHB06525	65 x 25	54	0.46
GMHB06540	65 x 40	40	0.53
GMHB06550	65 x 50	40	0.45
GMHB08025	80 x 25	59	0.65
GMHB08040	80 x 40	59	0.71
GMHB08050	80 x 50	44	0.79
GMHB08065	80 x 65	44	0.57
GMHB10040	100 x 40	51	1.12
GMHB10050	100 x 50	51	1.14
GMHB10065	100 x 65	51	1.33
GMHB10080	100 x 80	51	1.19
GMHB150100	150 x 100	86	3.2

MATERIALS
Galvanised Malleable
Ductile Iron BS EN 1562

SPECIFICATIONS
Thread
BSP to ISO 7-1
Cold Working Pressure
1000 kPa

STANDARD
Dimensional
BS EN 10242

VALVES

GALVANISED
MALLEABLESTAINLESS
STEEL FITTINGSBLACK & GAL
STEEL FITTINGSHIGH PRESSURE
FITTINGS

CAMLOCKS

ROLL GROOVE
FITTINGS

BUTTWELD

FLANGES