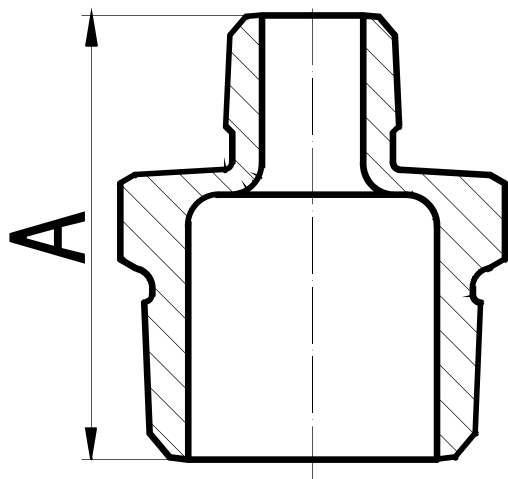


HEX REDUCING NIPPLE

GALVANISED MALLEABLE FITTINGS



GVF CODE	DN SIZE (mm)	A (mm)	WEIGHT (kg)
GMHRN01008	10 x 8	38	
GMHRN01508	15 x 8	44	0.05
GMHRN01510	15 x 10	44	0.06
GMHRN02010	20 x 10	47	0.08
GMHRN02015	20 x 15	47	0.09
GMHRN02515	25 x 15	53	0.12
GMHRN02520	25 x 20	53	0.14
GMHRN03220	32 x 20	57	0.19
GMHRN03225	32 x 25	57	0.2
GMHRN04015	40 x 15	59	0.21
GMHRN04020	40 x 20	59	0.21
GMHRN04025	40 x 25	59	0.24

GVF CODE	DN SIZE (mm)	A (mm)	WEIGHT (kg)
GMHRN04032	40 x 32	59	0.23
GMHRN05020	50 x 20	68	0.34
GMHRN05025	50 x 25	68	0.34
GMHRN05032	50 x 32	68	0.36
GMHRN05040	50 x 40	68	0.36
GMHRN06550	65 x 50	75	0.7
GMHRN08050	80 x 50	83	0.92
GMHRN08065	80 x 65	83	0.96
GMHRN10050	100 x 50	87	1.4
GMHRN10065	100 x 65	87	1.42
GMHRN10080	100 x 80	87	1.44

MATERIALS
Galvanised Malleable
Ductile Iron BS EN 1562

SPECIFICATIONS
Thread
BSP to ISO 7-1
Cold Working Pressure
1000 kPa

STANDARD
Dimensional
BS EN 10242

VALVES

GALVANISED
MALLEABLESTAINLESS
STEEL FITTINGSBLACK & GAL
STEEL FITTINGSHIGH PRESSURE
FITTINGS

CAMLOCKS

ROLL GROOVE

BUTTWELD

FLANGES