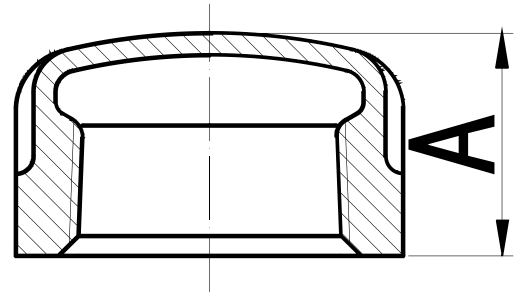
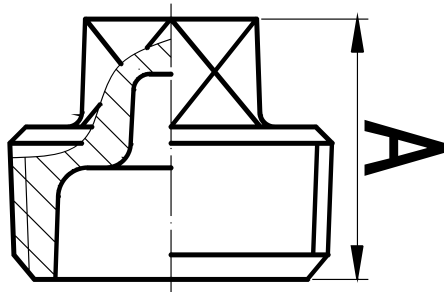


# PLUG & CAP

## GALVANISED MALLEABLE FITTINGS



GVF CODE PLUG	DN SIZE (mm)	A (mm)	WEIGHT (kg)
GMPG006	6	11	0.01
GMPG008	8	14	0.01
GMPG010	10	15	0.02
GMPG015	15	18	0.03
GMPG020	20	20	0.04
GMPG025	25	23	0.06
GMPG032	32	29	0.09
GMPG040	40	30	0.14
GMPG050	50	36	0.23
GMPG065	65	39	0.4
GMPG080	80	44	0.53
GMPG100	100	58	0.93
GMPG150	150	71.5	4.95

GVF CODE CAP	DN SIZE (mm)	A (mm)	WEIGHT (kg)
GMCAP008	8	15	0.02
GMCAP010	10	17	0.03
GMCAP015	15	19	0.05
GMCAP020	20	22	0.07
GMCAP025	25	24	0.11
GMCAP032	32	27	0.16
GMCAP040	40	27	0.2
GMCAP050	50	32	0.31
GMCAP065	65	35	0.41
GMCAP080	80	38	0.59
GMCAP100	100	45	0.99

MATERIALS
Galvanised Malleable
Ductile Iron BS EN 1562

SPECIFICATIONS
Thread
BSP to ISO 7-1
Cold Working Pressure
1000 kPa

STANDARD
Dimensional
BS EN 10242

VALVES

GALVANISED  
MALLEABLE

STAINLESS  
STEEL FITTINGS

BLACK & GAL  
STEEL FITTINGS

HIGH PRESSURE  
FITTINGS

CAMLOCKS

ROLL GROOVE

BUTT WELD

FLANGES