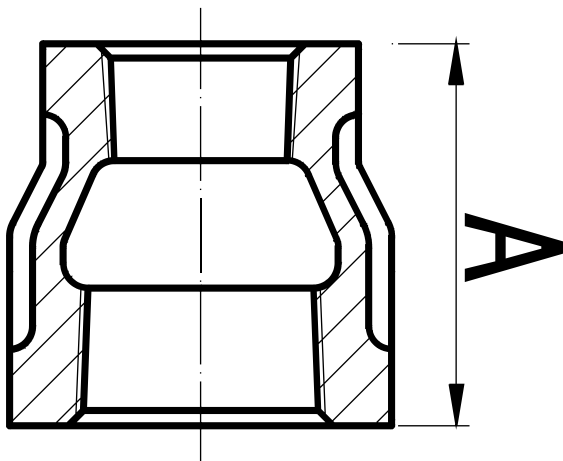


# REDUCING SOCKET

## GALVANISED MALLEABLE FITTINGS



GVF CODE	DN SIZE (mm)	A (mm)	WEIGHT (kg)
GMRS02015	20 x 15	39	0.11
GMRS02510	25 x 10	45	0.13
GMRS02515	25 x 15	45	0.14
GMRS02520	25 x 20	45	0.16
GMRS03215	32 x 15	50	0.2
GMRS03220	32 x 20	50	0.21
GMRS03225	32 x 25	50	0.23
GMRS04015	40 x 15	55	0.24
GMRS04020	40 x 20	55	0.25
GMRS04025	40 x 25	55	0.26
GMRS04032	40 x 32	55	0.3

GVF CODE	DN SIZE (mm)	A (mm)	WEIGHT (kg)
GMRS05025	50 x 25	65	0.4
GMRS05032	50 x 32	65	0.43
GMRS05040	50 x 40	65	0.47
GMRS06550	65 x 50	74	0.7
GMRS08040	80 x 40	80	0.79
GMRS08050	80 x 50	80	0.81
GMRS08065	80 x 65	80	0.86
GMRS10050	100 x 50	94	1.3
GMRS10065	100 x 65	94	1.32
GMRS10080	100 x 80	94	1.42

### MATERIALS

Galvanised Malleable  
Ductile Iron BS EN 1562

### SPECIFICATIONS

Thread  
BSP to ISO 7-1  
Cold Working Pressure  
1000 kPa

### STANDARD

Dimensional  
BS EN 10242

VALVES

GALVANISED  
MALLEABLESTAINLESS  
STEEL FITTINGSBLACK & GAL  
STEEL FITTINGSHIGH PRESSURE  
FITTINGS

CAMLOCKS

ROLL GROOVE  
FITTINGS

BUTTWELD

FLANGES