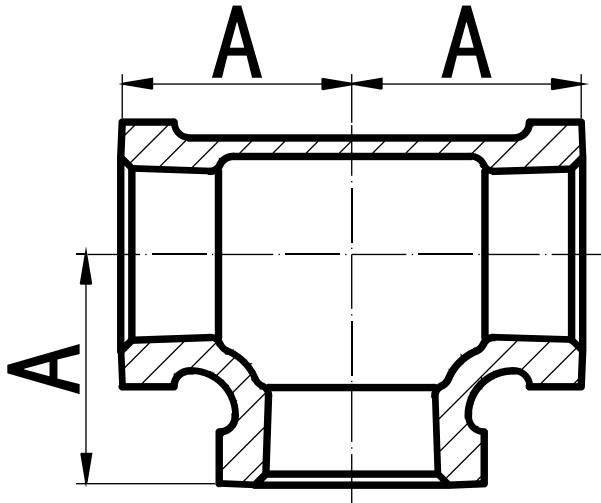


EQUAL TEE

GALVANISED MALLEABLE FITTINGS



GVF CODE	DN SIZE (mm)	A (mm)	WEIGHT (kg)
GMT008	8	21	0.07
GMT010	10	25	0.09
GMT015	15	28	0.14
GMT020	20	33	0.21
GMT025	25	38	0.31
GMT032	32	45	0.48
GMT040	40	50	0.61
GMT050	50	58	0.95
GMT065	65	69	1.49
GMT080	80	78	2.16
GMT100	100	96	3.56
GMT150	150	131	8.28

MATERIALS

Galvanised Malleable
Ductile Iron BS EN 1562

SPECIFICATIONS

Thread
BSP to ISO 7-1
Cold Working Pressure
1000 kPa

STANDARD

Dimensional
BS EN 10242

VALVES

GALVANISED
MALLEABLESTAINLESS
STEEL FITTINGSBLACK & GAL
STEEL FITTINGSHIGH PRESSURE
FITTINGS

CAMLOCKS

ROLL GROOVE
FITTINGSBUTTWELD
FITTINGS

FLANGES