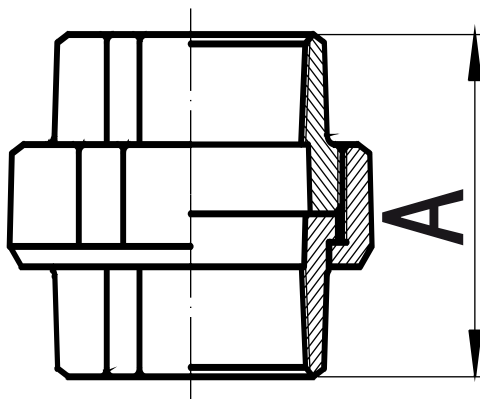


UNION

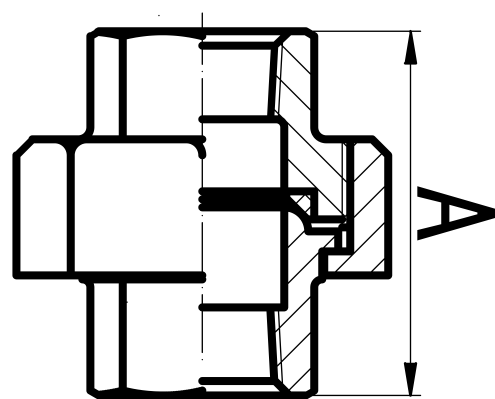
GALVANISED MALLEABLE FITTINGS



FLAT SEAT



BRASS CONICAL SEAT



GVF CODE FLAT SEAT	DN SIZE (mm)	A (mm)	WEIGHT (kg)
GMUFS015	15	48	0.2
GMUFS020	20	52	0.26
GMUFS025	25	58	0.39
GMUFS032	32	65	0.58
GMUFS040	40	70	0.73
GMUFS050	50	78	1.07
GMUFS065	65	85	1.62
GMUFS080	80	95	2.22
GMUFS100	100	100	3.8

GVF CODE BRASS CONICAL SEAT	DN SIZE (mm)	A (mm)	WEIGHT (kg)
GMUBS015	15	43.5	0.17
GMUBS020	20	49.5	0.26
GMUBS025	25	52.5	0.34
GMUBS032	32	57.5	0.6
GMUBS040	40	61	0.73
GMUBS050	50	70	1.07
GMUBS065	65	82	1.84
GMUBS080	80	89	2.34
GMUBS100	100	98	3.68

MATERIALS

Galvanised Malleable
Ductile Iron BS EN 1562

SPECIFICATIONS

Thread
BSP to ISO 7-1
Cold Working Pressure
1000 kPa

STANDARD

Dimensional
BS EN 10242

VALVES

GALVANISED
MALLEABLESTAINLESS
STEEL FITTINGSBLACK & GAL
STEEL FITTINGSHIGH PRESSURE
FITTINGS

CAMLOCKS

ROLL GROOVE

BUTTWELD

FLANGES