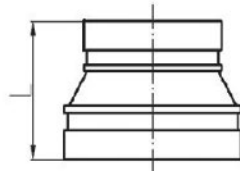
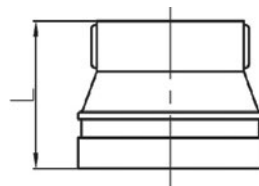


REDUCERS

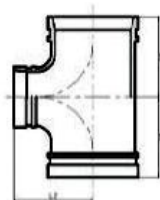
ROLL GROOVE

 VALVES
 GALVANISED MALLEABLE
 STAINLESS STEEL FITTINGS
 BLACK & GALV STEEL FITTINGS
 HIGH PRESSURE FITTINGS
 CAMLOCKS
 ROLL GROOVE
 BUTTWELD
 FLANGES


GVF CODE 90°		DN SIZE (mm)	SUITS OD (mm)	L (mm)	WEIGHT (kg)
PAINTED	GALV				
RGR04032	RGR04032G	40 x 32	48.3 x 42.4	64	0.26
RGR05040	RGR05040G	50 x 40	60.3 x 48.3	64	0.32
RGR06550	RGR06550G	65 x 50	76.1 x 60.3	64	0.43
RGR08050	RGR08050G	80 x 50	88.9 x 60.3	64	0.56
RGR08065	RGR08065G	80 x 65	88.9 x 76.1	64	0.72
RGR10050	RGR10050G	100 x 50	114.3 x 60.3	76	0.84
RGR10065	RGR10065G	100 x 65	114.3 x 76.1	76	0.94
RGR10080	RGR10080G	100 x 80	114.3 x 88.9	76	0.93
RGR15080	RGR15080G	150 x 80	165.1 x 88.9	102	1.85
RGR150100	RGR150100G	150 x 100	165.1 x 114.3	102	2.08
RGR200150	RGR200150G	200 x 150	219.1 x 165.1	127	4.9



GVF CODE 90°		DN SIZE (mm)	SUITS OD (mm)	L (mm)	WEIGHT (kg)
PAINTED	GALV				
RGR08025B	RGR08025BG	80 x 25	88.9	64	0.63
RGR10025B	RGR10025BG	100 x 25	114.3	76	0.91
RGR15025B	RGR15025BG	150 x 25	165.1	102	1.97



GVF CODE 90°		DN SIZE (mm)	SUITS OD (mm)	L1 (mm)	L2 (mm)	WEIGHT (kg)
PAINTED	GALV					
RGRT10080	RGRT10080G	100 x 80	114.3 x 88.9	101	101	2.86
RGRT15080	RGRT15080G	150 x 80	165.1 x 88.9	140	140	6.48
RGRT150100	RGRT150100G	150 x 100	165.1 x 114.3	140	140	6.91

MATERIALS	
Body	Ductile Iron
Gasket	EPDM

SPECIFICATIONS
Cold Working Pressure
1600 kPa / 300 PSI

STANDARD
Material
ASTM A536
Design
AWWA C606

