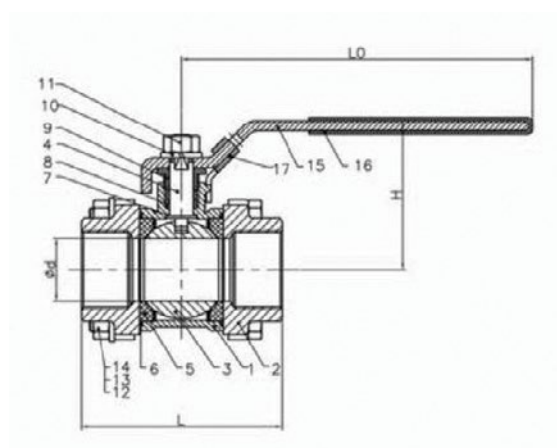


# STAINLESS STEEL 3PC BALL VALVE

## STAINLESS STEEL VALVES



GVF CODE	DN SIZE (mm)	Ød (mm)	L (mm)	H (mm)	L0 (mm)	WEIGHT (kg)
SSBV3P008	8	11	50.4	42.5	101.5	0.26
SSBV3P010	10	12	50.4	42.5	101.5	0.26
SSBV3P015	15	15	61.4	49.6	101.5	0.36
SSBV3P020	20	20	70.2	58.1	124	0.6
SSBV3P025	25	25	79.6	61.3	124	0.8
SSBV3P032	32	32	93	78.3	152	1.44
SSBV3P040	40	38	102	82.5	152	1.75
SSBV3P050	50	50	124.2	90.9	190	2.7
SSBV3P065	65	65	156.2	114.5	242	5.4
SSBV3P080	80	75	179.2	124	242	7.7
SSBV3P100	100	100	218.4	176	327	19.4

MATERIALS	
Body	CF8M
Cap	CF8M
Ball	CF8M
Stem	SS316
Seat	PTFE + 3% GF
Gasket	PTFE
Thrust Washer	PTFE
Stem Packing	PTFE
Gland	SS304
Spring Washer	SS304
Nut	SS304
Bolt	SS304
Handle	SS304
Handle Sleeve	PVC
Locker	SS304

SPECIFICATIONS
Max Working Temperature
150°C @ 75 PSI
Cold Working Pressure
1000 PSI
Not recommended for steam

STANDARD
Thread
BSP to ISO 7-1
Pressure Test
API 598

