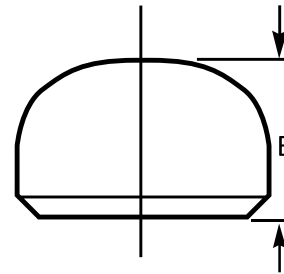
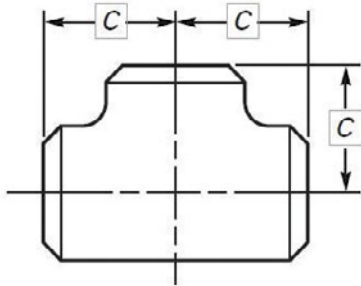


XS EQUAL TEE & CAP BUTTWELD



GVF CODE TEE	DN SIZE (mm)	OD SIZE (mm)	WALL (mm)	C (mm)	WEIGHT (kg)
TXS025	25	33.4	4.55	38	0.32
TXS032	32	42.2	4.85	48	0.55
TXS040	40	48.3	5.08	57	0.8
TXS050	50	60.3	5.54	64	1.19
TXS065	65	73	7.01	76	2.19
TXS080	80	88.9	7.62	86	3.24
TXS100	100	114.3	8.56	105	5.77
TXS125	125	141.3	9.53	124	9.28
TXS150	150	168.3	10.97	143	16
TXS200	200	219.1	12.7	178	29
TXS250	250	273	12.7	216	41.7
TXS300	300	323.8	12.7	254	58

GVF CODE CAP	DN SIZE (mm)	OD SIZE (mm)	WALL (mm)	E (mm)	WEIGHT (kg)
CXS025	25	33.4	4.55	38	0.14
CXS032	32	42.2	4.85	38	0.19
CXS040	40	48.3	5.08	38	0.23
CXS050	50	60.3	5.54	38	0.33
CXS065	65	73	7.01	38	0.53
CXS080	80	88.9	7.62	51	0.92
CXS100	100	114.3	8.56	64	1.67
CXS125	125	141.3	9.53	76	2.78
CXS150	150	168.3	10.97	89	4.47
CXS200	200	219.1	12.7	102	8.05
CXS250	250	273	12.7	127	12.5
CXS300	300	323.8	12.7	152	17.7

MATERIALS

ASTM A234 WPB
Carbon Steel Seamless

SPECIFICATIONS

Pressure Rating
As per ASME B31.3 (refer pg196)

STANDARD

Dimensional
ASME B16.9

VALVES
 GALVANISED MALLEABLE
 STAINLESS STEEL FITTINGS
 BLACK & GAL STEEL FITTINGS
 HIGH PRESSURE FITTINGS
 CAMLOCKS
 ROLL GROOVE
 BUTTWELD
 FLANGES