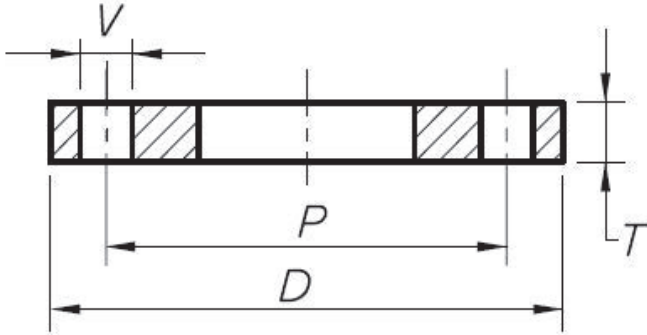


# TABLE "E" SLIP ON PLATE FLANGES



Nominal Pipe Size (mm)	GVF Code	OD of Flange D (mm)	Bolt Circle Diameter P (mm)	Bolt Hole Diameter V (mm)	Number of Bolt Holes	Thickness of Flange T (mm)	Weight Approx. (Kg)
15	ASSOE015	95	67	14	4	12	0.59
20	ASSOE020	100	73	14	4	12	0.64
25	ASSOE025	115	83	14	4	12	0.86
32	ASSOE032	120	87	14	4	12	0.9
40	ASSOE040	135	98	14	4	12	1.14
50	ASSOE050	150	114	18	4	12	1.32
65	ASSOE065	165	127	18	4	12	1.51
80	ASSOE080	185	146	18	4	12	1.88
100	ASSOE100	215	178	18	8	13	2.48
125	ASSOE125	255	210	18	8	14	3.73
150*	ASSOE150	280	235	22	8	17	5.01
200	ASSOE200	335	292	22	8	19	7.02
250	ASSOE250	405	356	22	12	22	11.26
300	ASSOE300	455	406	26	12	25	14.35
350	ASSOE350	525	470	26	12	29	25.05
400	ASSOE400	580	521	26	12	32	31.88
450	ASSOE450	640	584	26	16	35	40.49
500	ASSOE500	705	641	26	16	38	52.7
600	ASSOE600	825	756	33	16	48	84.58

#### MATERIALS

Q235B / Rst37.2  
Plate Steel

#### SPECIFICATIONS

Pressure Rating  
1400 kPa  
\*Available to suit 165 or 168 pipe

#### STANDARD

Dimensional  
AS2129

VALVES

GALVANISED  
MALLEABLESTAINLESS  
STEEL FITTINGSBLACK & GAL  
STEEL FITTINGSHIGH PRESSURE  
FITTINGS

CAMLOCKS

ROLL GROOVE

BUTTWELD

FLANGES